

Built for power. Built for growth.

inpO2 integrates powerful imposition technology within a familiar environment: Adobe® Acrobat®. This family of products offers all the key elements today's print professional look for. Editions and modules are available to create the solution that's right for you. From the simple wizard-driven approach to high-end planning, inpO2 has everything you need to accomplish all your imposition needs.

HIGHLIGHTS

1. Scalable Product Family.

Start with a powerful entry level tool that can grow to match your printing and workflow needs based on the same intuitive interface.

2. Familiar Environment of Acrobat.

Get up and running quickly as inpO2 is built right into Adobe Acrobat, a standard in today's production.

3. Imposition Flexibility.

Impose with ease, control and confidence — use the quick and intuitive Wizard for single document jobs, the Assembly Manager for complex multi-document layouts, automated ganging and planning, or command the inpO2 light table for total precision and control!

inpO2 EDITIONS

inpO2 :

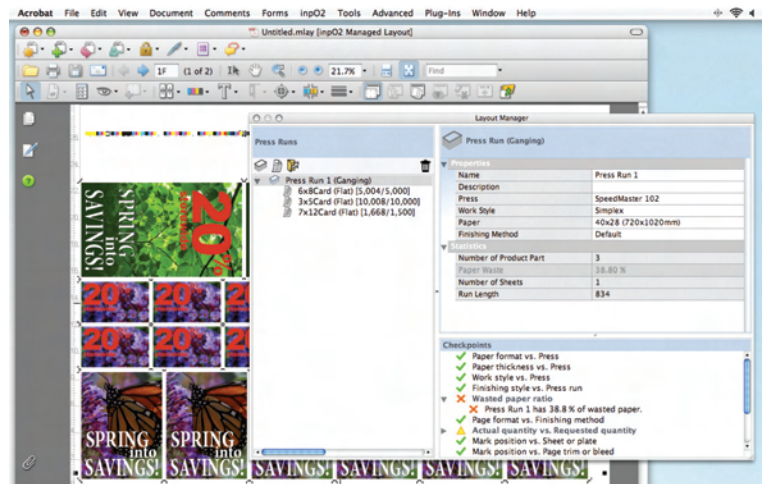
Full-featured imposition solution

- **Assembly Manager.** Produce complex impositions with this intuitive and flexible tree-view interface.
- **JDF output.** inpO2 allows you to output JDF or PDF files.
- **Network Licensing.** inpO2 is available with floating licences to allow up to 10 users to work simultaneously.

inpO2 ATOM :

Scaled-down edition of inpO2

- **Extensive Control.** Go beyond the Wizard and create custom layouts or make adjustments using the exclusive inpO2 LightTable. Also adjust gutters, margins, marks, shingling and more to meet just about any production needs.
- **Room to Grow.** Easily upgrade inpO2 ATOM by adding automated ganging, or move up to inpO2 Standard and keep the same familiar interface you've already learned.



Ganging multiple products with inpO2.



inpO2 OPTIONAL MODULES:



Optimization Module

- **Quick and simple.** Drag and drop jobs into the optimization module interface, enter the desired run length, and select your target output.
- **Automation with Control.** Override the automated results by changing your run list or expand a step and repeat to fill unused areas of the press sheet with a simple click of the mouse.
- **No limits.** Automatically gang as many jobs as needed on just about any format size in the Optimization module. There are no limits on number of jobs that can be optimized.



Planning Module

- **Plan, impose and integrate.** Share your planning layouts with production for final imposition using the same inpO2 product, or integrate with your workflow system with JDF export.
- **Plan with a click.** Try different layout scenarios with just a click of the mouse. Profile your presses and paper stocks to quickly change from one set-up to another with instant feedback on press-run length and waste!
- **Plan with Confidence.** Automatically get notified of potential problems with the built in CheckPoints to help avoid costly mistakes!



Web Press Module

- **Untangle your Web layouts.** Create complex layouts for single web, half web, multi-web, come and go or section stacking layouts with the inpO2 Web interface.
- **Flexibility and control.** Quickly modify your web layouts and see your layout changes in real-time right within Acrobat!

inpO2 PRODUCT FAMILY

Product Editions	Optional Modules		
	Optimization Module	Planning Module	Web Presse Module
inpO2 inpO2 ATOM	• X	X —	X —

•: Included X: Optional —: Not available with this product edition

TECHNICAL SPECIFICATIONS:

MINIMUM REQUIREMENTS

MAC OS X

Software Requirements

_Adobe® Acrobat® Standard or Professional (Professional recommended)
_Version 8.0+ (not compatible with Acrobat 7.0+)

Hardware and Systems Requirements

_PowerPC® G4 or G5 processor, or Intel processor (G5 recommended)
_Mac OS X v.10.3.x or 10.4.x

Windows

Software Requirements

_Adobe® Acrobat® Standard or Professional (Professional recommended)
_Version 8.0+ (not compatible with Acrobat 7.0+)

Hardware and Systems Requirements

_Intel® Pentium® processor
_Microsoft® Windows® 2000 with Service Pack 2 or Windows XP (SP2 recommended)

FILE FORMATS

- Input: PDF
- Output: PDF & JDF