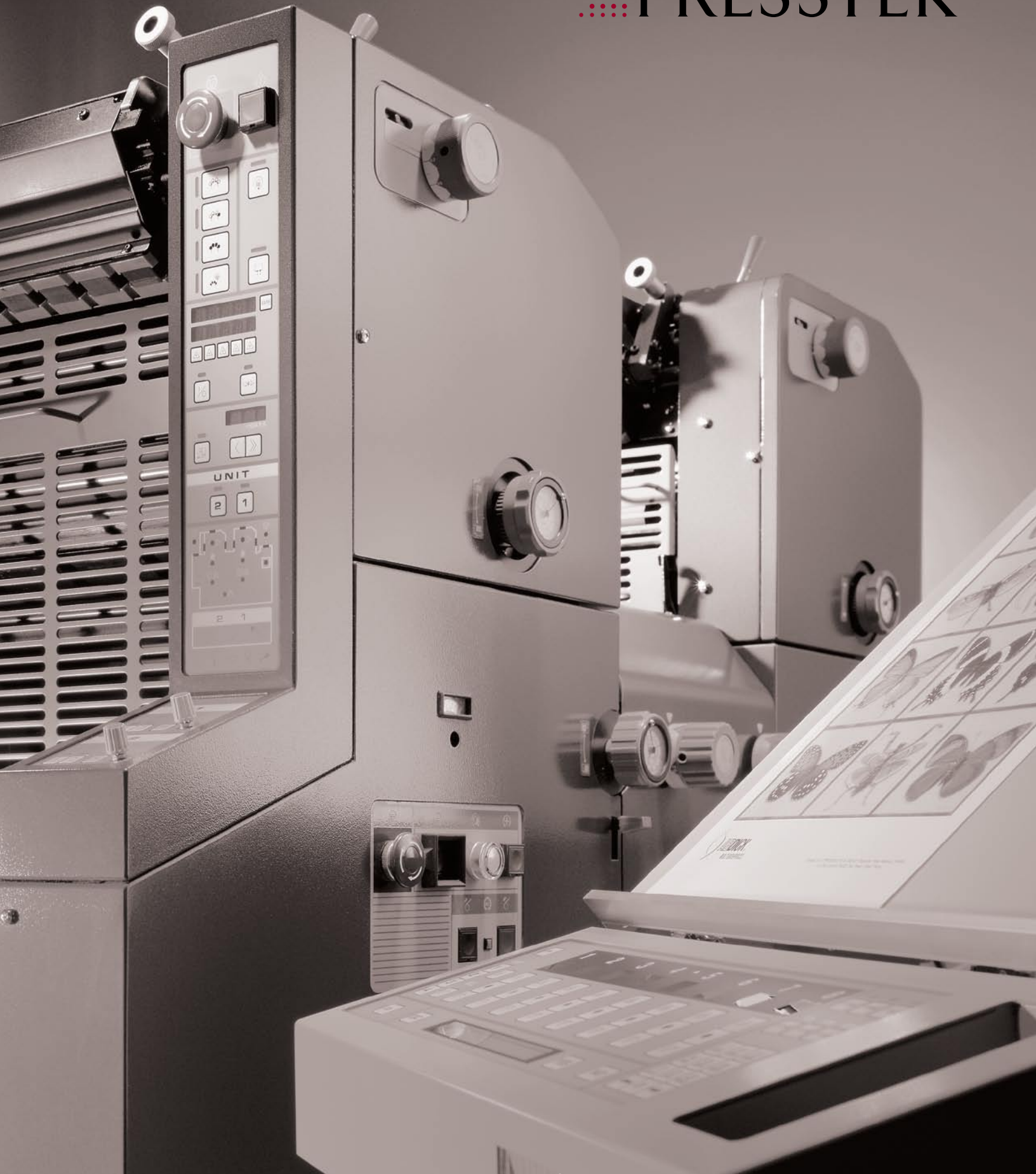


ABDick 9995 Series Offset Presses

 PRESSTEK

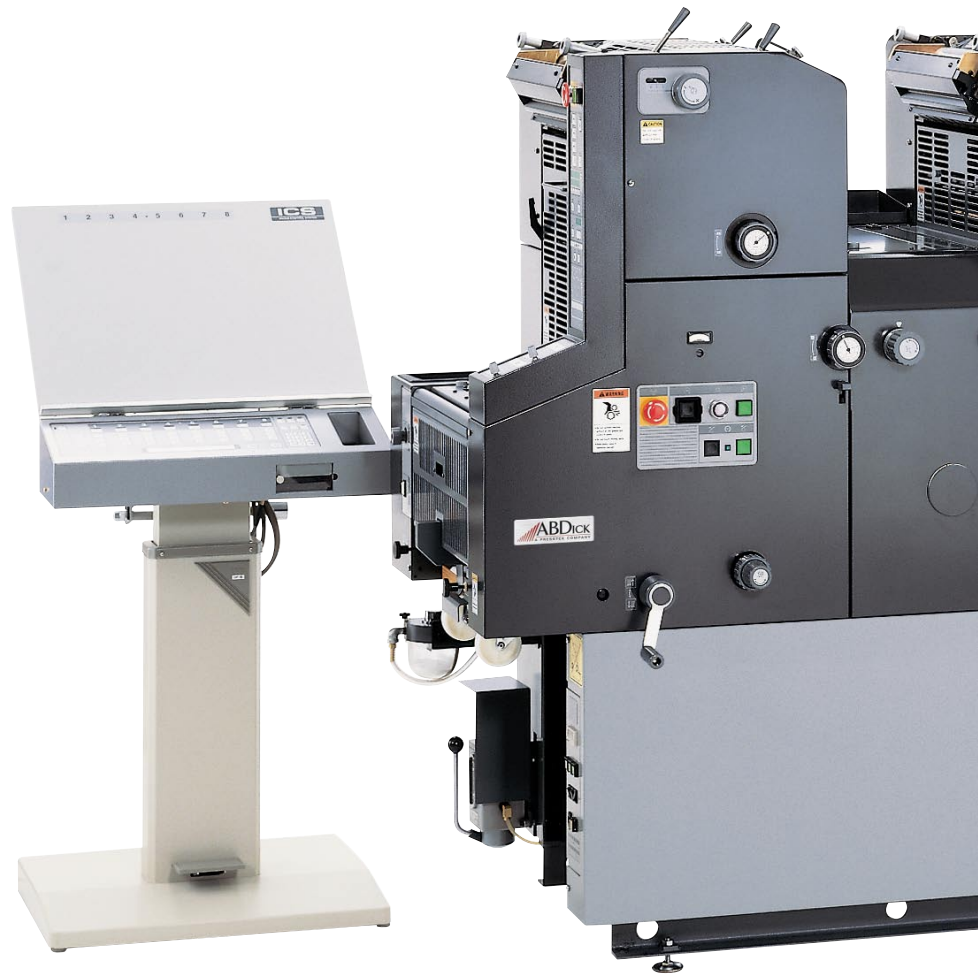


ABDICK 9995 SERIES TWO-TOWER OFFSET PRESSES

The ABDick 9995 Series are reliable, true two-color offset presses equipped with an array of features that simplify operation and increase productivity while consistently delivering high quality spot, multi- and process color output.

This series is available in three configurations: 9995C, 9995A, and 9995A-ICS. Each features two easily accessible individual printing heads which can be operated independently for single color work or simultaneously for two-color applications.

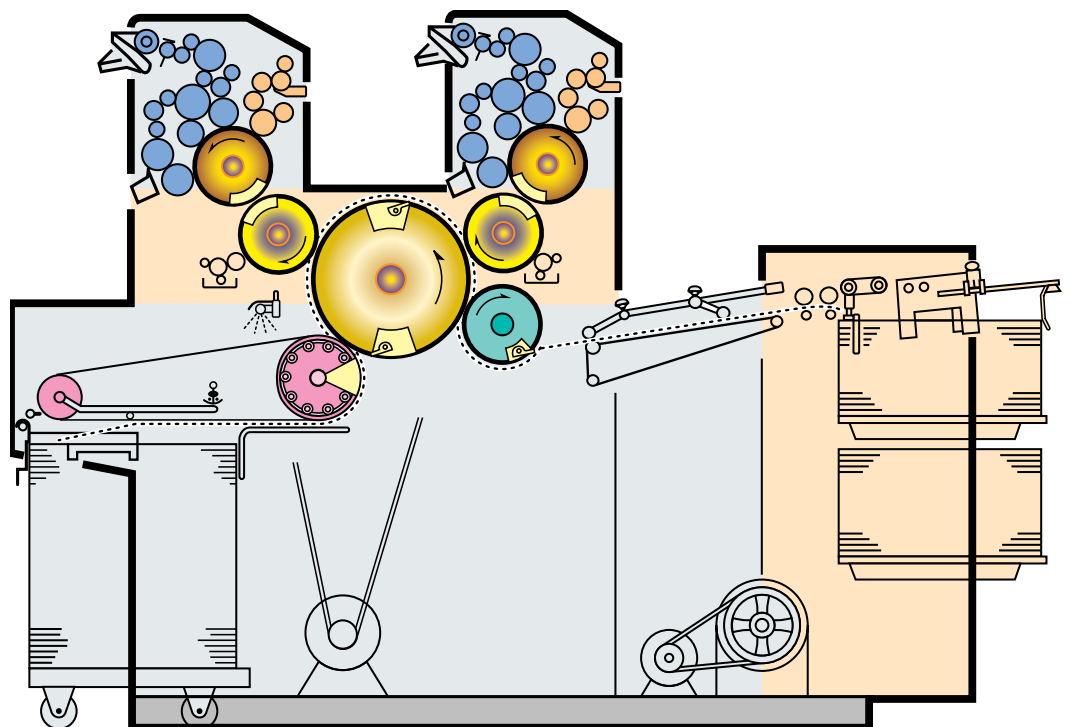
The 9995 Series is ideally suited to work in conjunction with Presstek's DPM, Vector FL52, and Dimension Excel CTP solutions.



V-SHAPED, 5-CYLINDER DESIGN

The printing heads feature a V-shaped, five-cylinder configuration. The design incorporates two plate cylinders and two blanket cylinders and two blanket cylinders. Separate blanket cylinders prevent ink migration for consistent color throughout the run. A common double-surface impression cylinder allows both colors to be printed without a gripper change, ensuring excellent registration.

Double sprung grippers are used on the paper feed drum and impression cylinders. A separate transfer cylinder promotes accurate paper registration. Even during high speed printing and heavy solid printing, precise registration accuracy is maintained.





Model Shown:
 ABDick 9995A-ICS with Semi-
 Automatic Plate Inserter and Inking
 Control System



POLYESTER OR METAL PLATES

Achieve excellent quality using a wide range of plate materials including digitally produced polyester-based plates as well as metal offset plates.

ABDICK 9995 SERIES FEATURES

- Ink Control System Console (9995A-ICS)
- Segmented Lever-Actuated Ink Fountains (9995C, 9995A)
- Semi-Automatic Plate Inserter (9995A, 9995A-ICS)
- Straight-Edge Plate Clamp with Register Pins (9995C)
- Centralized microprocessor control
- Push button operation
- Auto-sequencing
- Motorized continuous film dampening system/Crestline Dampener 9995C
- 16-Roller ink system with 3 ink form rollers
- Ink roller cleaning attachment
- Automatic ink ductor control
- Ink volume stepless adjustment
- Impression cylinder pressure control
- Plate cylinder predetermined position stop
- Quick release blanket bars
- Paper path setup software
- Double sheet detection (mechanical)
- Static eliminator on feeder
- Paper jam detection with indicator
- Extended push guides
- Precise vertical image adjustment
- On-the-fly lateral image adjustment
- Diagonal sheet skew adjustment
- Pre-pile capability with 2 paper tables
- Chain delivery with 2 roll-away dollies
- Delivery pile automatically receding stacker and lower limit switch
- Anti off-set powder spray unit
- Preset repeat counter with batch function (electronic, 5 digits)
- Machine counter (total no. of machine rotations, 8 digits, non resettable)
- Emergency stop buttons (at each printing unit and delivery sections)
- Cylinder safety bars and safety covers
- Centralized lubrication system
- Oil pans (2)
- Standard tool kit
- Work organizer
- Blanket wash plunger can

CENTRALIZED CONTROLS

Ease of use and operator comfort are assured with lever-free operation. Push-button controls are concentrated at the delivery side which minimizes operator movement to allow more time for focusing on print quality.

Printing unit selection, press speed, number of prints and the dampening solution supply volume can all be set at the delivery side. An additional control panel at the feeder furthers convenience and productivity.

After makeready operations, the operator starts printing by simply pushing the production button which activates pumps, paper feed and the gradual acceleration to the desired press speed.

Inking and switching the water form roller on and off are also done simply by pushing buttons.

The handy paper size change button reduces makeready time and paper waste when changing stock sizes. One touch feeds a single sheet which automatically stops at both the feeder and delivery sections, allowing quick set-up and easy resetting of the paper guides.



Push buttons on the centralized control panel allow simplified operation.

9995 INKING SYSTEMS

The 9995 Series features a 16-roller inking system, including three ink form rollers of differing diameters, that provides superior screen quality and the capability to print large, dense solids.

This system features ink ductor roller shut off. In automatic mode, the ink ductor roller operates only while printing. When the 'on' button is depressed, it operates continuously.

The drop-down ink fountain and ink roller cleanup device allow fast, easy cleaning. Ink form rollers can be released if idle to increase roller life and prevent flat spots on roller surfaces.

Presstek offers a choice of either the Ink Control System on the 9995A-ICS or the Segmented Lever-Actuated Ink Fountains on the 9995C and 9995A. Both systems are designed to simplify operation, increase productivity and ensure consistent ink balance and color tones during the run.

IVS Software options facilitate greater workflow efficiency by estimating the ink fountain key settings for newly designed print jobs. And, they do it before a single sheet has been run through the press which reduces makeready time.

FEEDER & DELIVERY SYSTEMS

The universal feeder accommodates a wide range of printing jobs—from postcards and envelopes to full brochures.

Feed guides are easily adjusted and incorporate rear blowers for reliability. The system features micro-adjustment for small movements in paper stocks. A static eliminator bar in the feeder minimizes problems caused by static electricity in dry environments.

Multiple sensors monitor paper travel. When a paper jam or double sheet is detected, the press shuts down automatically, and an LCD displays indicate the source of paper trouble. Mechanical doubles detection is standard; optional electronic detectors are self-calibrating and require less operator intervention.



It's ready to go again when the last sheet of the first stack is fed.



lets the operator unload less often during long runs. When the delivery table limit is reached, a switch automatically shuts off paper feed so the stack does not overload.

An optional universal pile board can be used for different stock sizes and promotes easier and faster setup.

The pre-piling feature enhances productivity by allowing paper to be preloaded while the machine continues to run.

A chain delivery with automatically lowering, roll-away paper platforms is featured on the 9995s. A capacity of 17.3" (440 mm)

OPTIONS DELIVER EXCEPTIONAL RESULTS WITH LESS EFFORT

Ink Control System (ICS)

The integrated Ink Control System (on ICS model) provides remote control over automated ink fountain keys from a stand-alone, delivery-side console. The operator simply 'punches in' the ink feed rate for the precise coverage needed for the image.

ICS reduces the time and effort required for ink zone adjustment resulting in quicker, more efficient make ready. It also reduces the labor involved with the continual observation and adjustment of ink densities during press runs.

Once optimal ink values for a job are obtained, those settings can be stored on a 3.5" floppy disk for easy retrieval and fast setup for future reprints.

This factory-installed system works in conjunction with the optional IVS software.

Segmented Lever-Actuated Ink Fountains

9995C and 9995A presses are equipped with segmented lever-actuated ink fountains. Split segments are laser cut into the ink blade so that each region operates independently against the fountain roll. This results in more precise ink control.

Calibrated setting numbers provide a good starting place for ink densities. Graduated levers make it possible to quickly profile the current ink supply; and by raising or lowering the levers, fine adjustments can be made to the flow of ink for better color control and image consistency.

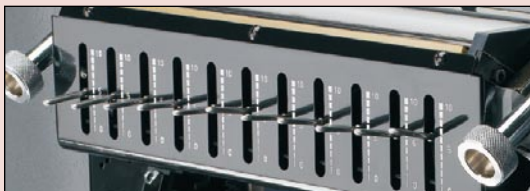


SOFTWARE AUTOMATES INK FOUNTAIN KEY SETTINGS

Ink Volume Setter (IVS) software option is designed to get the best coverage using the least amount of ink—promoting a high quality image with less set-off and faster drying times.

IVS analyzes the light and dark areas in each process color separation of a job, and based on the image data, estimates the appropriate settings for each ink key region.

IVS software delivers the digital data via a floppy disk to the ICS console which then automatically sets the ink fountain keys to the corresponding levels. IVS can be installed on Momentum RIP for DPM and Vector plate setters.



OPTIONAL REGISTER PUNCHES SIMPLIFY PLATE PREPARATION

Upgrading to one of these optional punches simplifies operation and reduces the time required for make ready and on-press adjustments.

The high-precision optical pre-register punch delivers highly accurate results. This lower cost unit lets the operator line up the image optically to the targets on a plate.

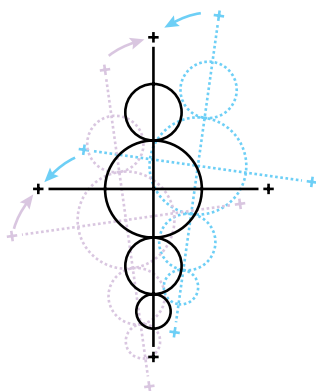
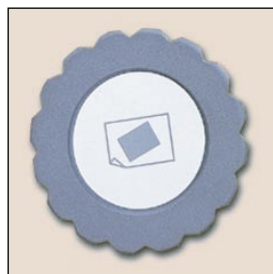
The video plate punch provides further efficiency and precision. The plate image is magnified 40x and displayed on video monitors making it easy to perfectly align register targets in a fraction of the time. It can be used with portrait and landscape presses and accepts plates up to 22 x 29" (559 x 737 mm).



EASY ADJUSTMENTS FOR EXCELLENT REGISTRATION

Dial-type image adjustment provides precise vertical (± 20 mm, $\pm .79$ ") and lateral (± 2 mm, $\pm .079$ ") control of the print image position which significantly reduces the time and effort required for registration. Lateral adjustments can be made on-the-fly for increased productivity.

A unique sheet skewing device further enhances registration capabilities. The operator can make diagonal micro adjustments (up to ± 0.5 mm) quickly without stopping the press.



Leading Edge

MANUAL PLATE CLAMPS



Our 9995C model features manual, straight-edge plate clamps. Positioning pins locate the printing plate into the proper position,

allowing the operator to quickly and accurately mount plates.

A two-position lever ensures that the spring tension in the plate clamp system is optimal for either metal or polyester plates which is helpful in preventing plate stretch.

SEMI-AUTOMATIC PLATE INSERTER ON 'A' MODELS

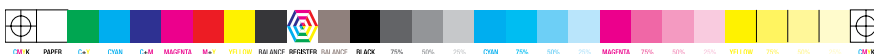
Both the 9995A and 9995A-ICS presses feature a semi-automatic plate insertion system for easier plate handling and more accurate operation.



Printers who turn around many multi-color or short-run jobs will find this to be an excellent time-saving feature.

With less intervention required by the operator, and no tools needed for changing plates, makeready times and paper waste are significantly reduced.

Metal or polyester plates are loaded semi-automatically by a pneumatic system which ensures reliability and precision. An operator can start printing with the touch of a button at the control panel, and precise registration is more easily achieved.





CONTINUOUS MOTORIZED FILM DAMPENING SYSTEM

A continuous motorized film dampening system is featured on the 9995 Series for excellent fountain solution control in running a variety of printing plates.

A 6-roller configuration, including a motor-driven fountain roller, forms an optimal water film on the plate surface from the start of printing.

This flexible system enables precise regulation of dampening solution supply volume to match paper stock, ink, plate

materials and environmental conditions for excellent printed results.

Switching between two modes of pre-wet cycles supplies the proper water film thickness to match the plate material—metal or polyester—delivering stable quality from the start of printing.

The pre-wet switch lets the operator apply quick bursts of additional moisture to the plate surface on demand. This is helpful during setup, starting up when running silver plate material and for cleaning up plates quickly.

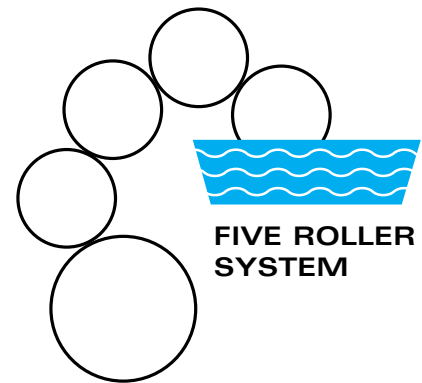
Moisture level sensors monitor dampening solution, and when necessary, automatically shuts off the dampener motor and paper feed and lights an indicator. Moisture rollers can be run at a slow speed for setting metering roller squeeze and unit maintenance.

The 9995A and 9995A-ICS include a chiller/recirculator that delivers full performance from the dampening system and makes it particularly suited to polyester plates and longer runs.

A Crestline Dampener is standard on the 9995C.

ALL WATER SYSTEMS ARE NOT THE SAME!

Each Crestline is designed and manufactured to carry a specific amount of water to the plate. Only high-quality components are used in Crestline dampners. This minimizes the time you need to achieve ink-water balance.



shop.presstek.com

BUY SUPPLIES ONLINE! IT'S FAST, SECURE AND AVAILABLE 24/7

Visit us at shop.presstek.com to purchase supplies for your 9995 series press, pressroom supplies, parts and small equipment products.

Shop on-line and, use a payment method that's right for you—major credit card or Presstek account.

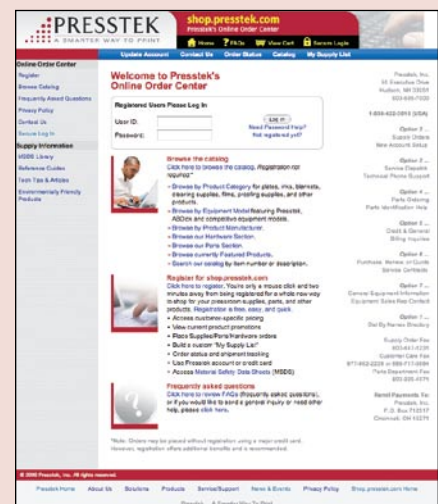
When visiting (whether registered or not), you can browse our product catalog. The catalog is divided into well-defined sections, products are easily identified, making the search for supplies, parts and other products an easy one.

Logging in as a registered user gives you additional benefits such as customer-specific pricing, promotional offerings and the ability to build a custom 'my supply list' for easy future orders.

If you're new to purchasing online, or doing business with Presstek, see our FAQ section. It covers a wide range of topics about the entire ordering process.

A 'Contact Us' form lets you send questions or comments. We'll reply quickly.

Visit shop.presstek.com today, and see how we're making life a little easier for our valued customers.



ABDick 9995 Series Offset Presses

9995 PRESS CONFIGURATIONS FEATURE:	9995C	9995A	9995-ICS	9995A-ICS
Straight-Edge Plate Clamp with Register Pins	STD	N/A	STD	N/A
Semi-Automatic Plate Inserter*	N/A	STD	N/A	STD
Segmented Lever-Actuated Ink Fountains	STD	STD	N/A	N/A
Ink Control System Console*	N/A	N/A	STD	STD
Recirculator with Level Sensors	OPT	N/A	STD	N/A
Chiller / Recirculator with Level Sensors 115V, 50/60Hz (1-4351); 230V, 50/60Hz (1-4352)	OPT	STD	OPT	STD
Hand Operated Register Punch	OPT	N/A	STD	N/A
High-Precision Optical Register Punch	OPT	STD	OPT	STD
Video Register Punch	OPT	OPT	OPT	OPT
IVS Ink Volume Setting Software	N/A	N/A	OPT	OPT
IKE Ink Key Estimator Software (for use w/DPM only)	N/A	N/A	OPT	OPT

* Factory-installed at time of order only.

OPTIONAL ACCESSORIES

42010 Infrared / Dry Powder (220 volt)	42009 Super Blue Anti-Tracking Device
42008 Blanket Cleaning Devices	5601 Super Blue Replacement Net
42003 Electronic Double Sheet Detector	42004 Optical Register Punch
42005 Universal Paper Pile Board	49001 Video Register Punch
43277 Card Guide	42006 Print Counter
43293XC Tape Inserter	42006 Print Counter (Total number of printed sheets 8 digits non resettable)

SPECIFICATIONS

DAMPENING SYSTEM	Continuous motorized film dampener/Crestline
PRINTING SPEED	3,000 to 10,000 IPH variable
MAXIMUM IMAGE AREA	12.99" W x 17.24" L (330 x 438 mm)
MAXIMUM PAPER SIZE	13.39" W x 17.72" L (340 x 450 mm)
MINIMUM PAPER SIZE	3.54" W x 3.94" L (90 x 100 mm)
PAPER THICKNESS	.0016" to .012" (.04 to .3 mm)
BLANKET SYSTEM	Blanket with quick-release aluminum bars
PLATE SIZE	13.19" W x 19.09" L (335 x 485 mm)
PLATE CLAMP TYPE	Straight-edge plate clamp with positioning pins (spring-tension system)
FEEDING SYSTEM	Universal feeder, 12 section feet
PAPER REGISTER SYSTEM	Alternate side-to-side push guide for work-and-turn applications
FEEDER PILE SYSTEM	Pre-pile, capacity: 17.3" (440 mm)
DELIVERY SYSTEM	Chain delivery with automatic receding stacker, capacity: 17.3" (440 mm)
IMAGE ADJUSTMENTS	Lateral: .079" (±2.0 mm); Vertical: .79" (±20 mm)
SHEET SKEWING ADJ.	Diagonal: ±0.5 mm
GRIPPER MARGIN	0.31" (8 mm)
ROLLERS	Ink rollers: 16 (Form rollers: 3) Water rollers: 6 (Form roller: 1)
DIMENSIONS	92" L x 34" W x 63" H (2336 x 864 x 1600 mm)
WEIGHT	9995C: 2,866 lbs. (1300 kg) 9995A: 2,932 lbs. (1330 kg)
ICS CONSOLE	28" L x 24" W x 59" H (711 x 610 x 1499 mm)
POWER REQUIREMENTS	Single phase 220V, 50/60Hz, 20A

Product information and specifications are subject to change without notice. Tradenames are the property of their respective owners. © 2009 Presstek, Inc.

SUPPLIES

SUBTRACTIVE METAL PLATES

57527 Matte Blue 5.5mil 13-3/16" x 19-3/32" (335 x 485 mm)	Pkg	50/Pkg
59614 ABDick 5.5mil Grained 13-3/16" x 19-3/32" (335 x 485 mm)	Pkg	100/Pkg
83-8-108561 Triton Blue SC XLR-1 8mil 13-3/16" x 19-3/32" (335 x 485 mm)	Pkg	60/Pkg

CHEMISTRY FOR SUBTRACTIVE PLATES

58184 ABDick Subtractive Plate Developer for Grained Plates	Gal	4/Cs
57183 ABDick Subtractive Plate Finisher	Gal	4/Cs
57184 ABDick 2-in-1 Developer	Gal	4/Cs
59184 ABDick 2-in-1 Developer for Grained Plates	Gal	4/Cs
KITCZ000 Triton Blue Developer/Finisher	5 Liter Btl.	4/Cs
4-1320 ABDick Subtractive Plate Gum	Gal	4/Cs
4-9970 Metal Plate Image Remover Pen	Each	12/Cs
4-8014 Presensitized Plate Cleaner	Quart	6/Cs

POLYESTER PLATES, CHEMISTRY AND ACCESSORIES

For high quality, short-run, multi-color work, try these polyester plates and chemistries: ABDick MEGAPlus, MEGAPro, MegaPrint or QuickSilver Next Generation. Contact your Presstek representative or visit shop.presstek.com for the correct plate product to fit your platemaking system and printing requirements.

43493 Masking Paper 13-1/2" x 19-1/2" (343 x 495 mm)	100/ Box	5/Cs
--	----------	------

PRESS BLANKETS

43297 Quick Release Blanket Holder (order 1 set per tower)	Each	Each
43298-P Conventional Quick Release Blanket w/Aluminum Bar	Case	2/Cs
43456-P Compressible Blanket (.098) 13" x 19-1/2" (330 x 495 mm)	Case	2/Cs
43457-P Hard Blanket (.065)	Case	2/Cs
43458 Mylar Packer (.035)	Each	2/Cs
43461-P Quick Release Packer	Case	2/Cs
4-6000 Blanket Fix 3oz	Bottle	6/Cs

INKS

PSI-DB Pro-Set Ink Dense Black	5 lb./Can	Each
PSI-PB Pro-Set Ink Black	5 lb./Can	Each
PSI-PC Pro-Set Ink Cyan	5 lb./Can	Each
PSI-PM Pro-Set Ink Magenta	5 lb./Can	Each
PSI-PY Pro-Set Ink Yellow	5 lb./Can	Each

FOUNTAIN CONCENTRATE / ADDITIVES

4-1185 PROformance Fountain Concentrate pH 4.3-4.5	Gal	4/Cs
4-1195 Universal Fountain Concentrate pH 5.6-6.0	Gal	4/Cs
38778 MEGA CMS+ Fountain Concentrate pH 4.0	Gal	1/Cs
4-H20 Deionized Press Water	Gal	4Gal/Cse
38704 Silver-Wet Fountain Wetting Additive for MEGA Plates	Case	6/Cs

ALCOHOL / REPLACEMENT

4-1172 Isopropyl Alcohol	Gal	1/Cs
4-1177 Isopropyl Alcohol Substitute	Gal	4/Cs
4-1275 SureDot Alcohol Replacement	Gal	4/Cs
38702 Silver-Sub Alcohol Replacement	Liter	6/Cs

ETCH

4-1015 Blue Etch	Gal	4/Cs
38766 MEGA Etch	Case	6 Qts/Cs

BLANKET / ROLLER WASH

4-1235 Automatic Blanket Wash	Gal	4/Cs
4-1200 Safety Zone Blanket Wash	Gal	4/Cs
4-1238 SureDot Watermiscible Blanket Wash (Pre-Diluted)	(2) 2.5 Gal	Case
4-1248 SureDot Watermiscible Blanket Wash (Concentrated)	5 Gal	Each
4-4315 Blanket Wash	Gal	4/Cs

ROLLER MAINTENANCE SUPPLIES

36797 Cleaner Sheets 13-5/8" x 19-3/8" (346 x 492 mm)	100/Pkg	5/Cs
4-1249 SureDot Meter Water Roll Cleaner	Quart	4/Cs
83-5-101395 Chrome Cylinder Cleaner	Pint	12/Cs
4-4968 Glaze Remover	Pint	2/Cs
4-4970 Ink Roller Desensitizer	Pint	12/Cs
4-4976 Ink Roller Conditioner	16 oz/Btl	4/Cs
4-4978 Ink Roller Paste Deglazer	17 oz/Btl	6/Cs
4-4983 Ink Roller Cleaner	7 oz/Btl	6/Cs

MISCELLANEOUS SUPPLIES

3-3599 Dry Roller Lube	3Lb.	Each
4-4931-CS Cotton Pads 4" x 4" (101 x 101 mm)	100 Wipes/Pkg	20/Case
4-4940 Heavy Duty Shop Towel Bundles	375/Cs	Case
4-4945 Heavy Duty Shop Towel Rolls	2 Roll/Cs	Case
4-4991 Vinyl Glove (Medium)	100/Box	10/Cs
4-4992 Vinyl Glove (Large)	100/Box	10/Cs
4-4938 Hand Cleaner	12 oz/Btl	12/Cs
4-4939 Hand Cleaner With Pump	1/2 Gal/Btl	6/Cs
4-4988 Grit Hand Cleaner	17 oz/Btl	6/Cs
4-1362 Kresto EF Hand Cleaner (250ml)	Tube	24/Cs
4-4948 Handy-Klinz Pro Premoistened Hand Wipes	72/Bucket	6/Cs
4-3800 Offset Spray Powder - 26 Micron	5 Lb.	Box
9-1003-EA Squeeze Bottle	Bottle	24/Cs
9-2255 Stouffer 21 Step Gray Scale	Each	Each
5601 Super Blue Replacement Net	Kit	6/Kit

Some products listed above are available in larger quantities. For a complete list of 9995 Series Offset Press and other supplies and pressroom products, visit us online at shop.presstek.com where you can browse the entire catalog and place orders 24/7.

