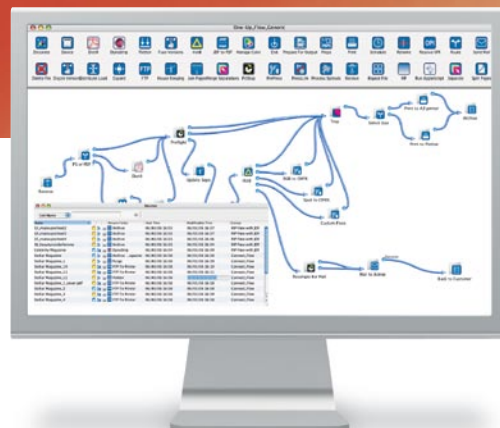


# Presstek Latitude

Highly Automated PDF/JDF Workflow System

- Easy to Use and Configure
- Native PDF 1.7, JDF and Certified PDF
- Powerful Pre-press Production Tools
- Advanced Trapping that Retains All Transparencies
- Fully Integrated Imposition Engine
- Advanced Screening Technologies

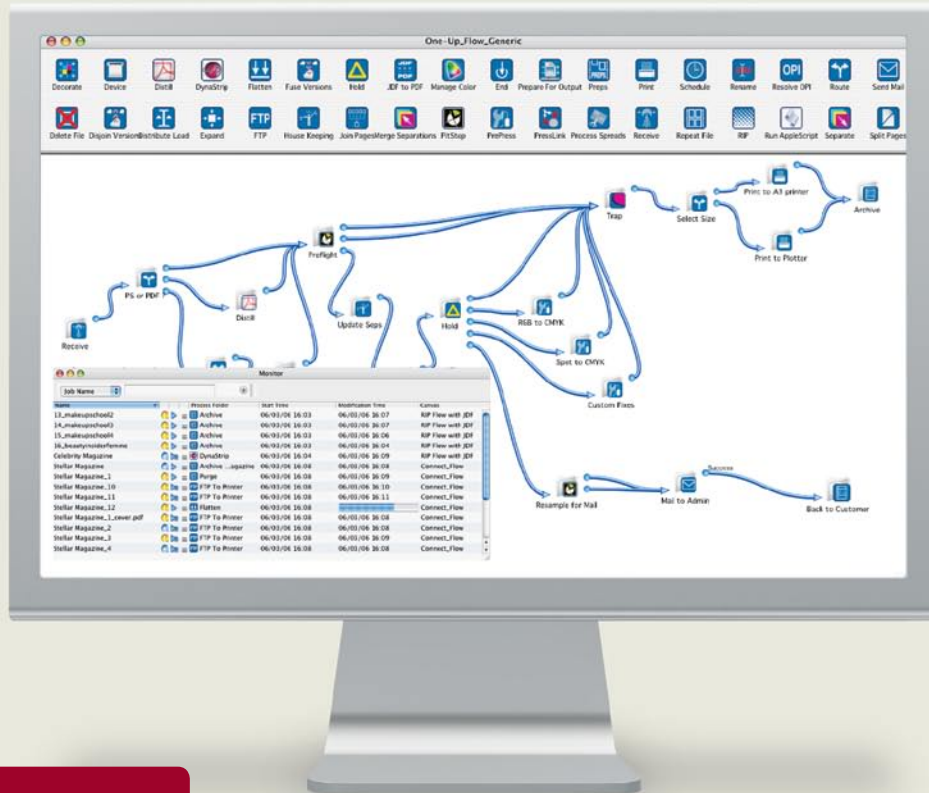


# Presstek Latitude

High Levels of Control, Efficiency and Flexibility

Presstek Latitude is a highly automated and advanced pre-press workflow solution powered by EskoArtwork Odystar. Based on native PDF 1.7 format, it supports the latest standards in JDF and Certified PDF. It offers a complete range of pre-press tools, from preflight, PDF certification and automated document correction all the way to advanced trapping, imposition, proofing and screening.

Latitude is a completely integrated solution for PDF creation and production. It also transforms legacy PS3 or PDF 1.3 RIPs and workflows into PDF 1.7 compliant devices. Easy-to-use and configure, Latitude significantly raises productivity in pre-press environments.



## Intuitive User Interface

Easy setup, comprehensive configuration and intuitive graphical user interface maximizes operator efficiency and enables even a novice user in no time.

## A Valuable Business Asset

Latitude is aimed at automating the daily work in a pre-press production environment. In addition to driving output devices, it provides extremely flexible workflow tools that automate more processes and communication in your pre-press department than ever before.

Running on Mac OS X, Latitude is open to all pre-press and publishing environments. It has never been easier to integrate third-party products into a workflow solution. Any application that is scriptable, as well as hot folder-based applications, can be easily integrated.

A workflow solution also needs to be scalable and to grow as your organization moves forward. Latitude increases your return on investment by allowing users to distribute the workflow over multiple hardware platforms with fully automated load balancing.

Latitude also makes sure that even PDF 1.7 files with transparencies can be seamlessly output to your current PDF 1.3 workflow or PS3 RIP by using highly sophisticated flattening, separation and printing technology.

## Powerful PDF Features

### Native PDF 1.7

- Full transparency support
- Ensures file integrity

With Latitude, no flattening is required at any stage in the workflow. This results in increased reliability and productivity, and full editability for last minute corrections. For remote locations that do not support transparencies, an advanced flattening module is provided. Latitude also supports a wide range of file types, including all Postscript® formats (separated or composite) and image file formats.

## Certified PDF

Latitude utilizes Enfocus Certified PDF® technology throughout the workflow. Each step in the workflow that modifies the PDF content supports incremental save and rollback, with certification capabilities. Files retain their full integrity, with guaranteed quality and traceability. This allows for accountability throughout the entire workflow.

## Versatile PDF Editing

Neo is a highly productive native PDF editor that easily accommodates last minute changes. Operators can effectively edit and correct multi-page PDF files—a high-value asset in dramatically reducing time spent in the correction cycles that are unavoidable in today's business environments.



## Highly Automated Imposition

- Streamline the imposition directly within the automated workflow
- Build less imposition templates and increase throughput
- Allow for late binding changes

Latitude can accept any JDF layout file originating from other major imposition programs. This JDF file contains references to the actual pages which Latitude will automatically insert in the imposition. Even if the pages arrive in the workflow at different times, Latitude can automatically output the sheets as they are being filled with the incoming pages, for a maximum level of productivity.

Latitude features an integrated imposition engine based on DynaStrip™ from DynaGram. It is designed to accelerate and facilitate imposition of any type of work. When a job is submitted to Latitude, the operator simply sets up the job ticket describing parameters such as source documents, the sheet template, binding, creep, work and turn or tumble, offsets, and plate definitions.

## State-of-the-Art RIP

- True native PDF 1.7 RIP
- Drives all Presstek DI presses and Presstek CTP devices
- Runs on Mac OS X platform

Latitude's PDF 1.7 RIP outputs color-accurate data to proofing equipment as well as screened information to plate with elaborate calibration controls. For quality assurance, DotSpy™ is available for checking screened plate data before committing to physical output.

## Paragon

## Organic

## Concentric



## Advanced Trapping

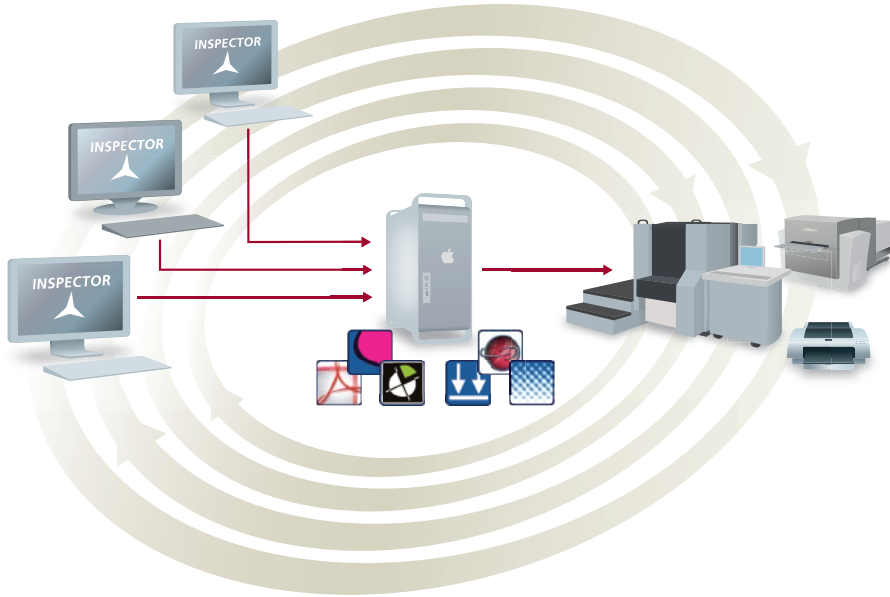
- Deliver better quality printed materials
- Reduce paper waste
- Run your presses faster

All transparencies are taken into account, and even the image content is considered when determining trapping directions. Trapping simply becomes an automated step in the process of making a print-ready job. As the trapping is object-based, traps can be previewed and even edited in native PDF editing tools like Neo. And, using the flattening technology available in Latitude, even older PS3 or PDF 1.3 RIPs can easily process traps that are generated in Latitude.

## Latitude Technology

Latitude provides a client-server workflow that facilitates high levels of automation, even in the most demanding printing environments.

Latitude offers state-of-the-art technology. Through the intuitive Inspector, administrators will be able to quickly setup workflows by stringing a wide range of processes together in a logical order. And, operators will appreciate the ease of use of the Shuttle client to monitor jobs, and to submit files with job-specific settings like imposition templates or FTP addresses.



## JDF Job Tickets

With Latitude, every job automatically receives its own JDF job ticket, which contains general job information and retains all information about each process the job has gone through in the workflow. Full facilities are provided to easily monitor and modify the content of the job ticket, which enables reprocessing files with modified parameters and easy tracking of jobs. Since JDF job tickets contain a full audit trail, communication with MIS or other database systems becomes easy, allowing for reporting, calculating, tracking, statistics, and more.



## Service and Support

Presstek provides an integrated support network of field engineers, customer care representatives, technical support engineers, and on-board monitoring of digital systems—all supported by advanced information technology systems. Expert installation, training and maintenance supports your investment so it will pay dividends quickly and reliably for years to come.



## Environmental Advantages

Presstek DI is an environmentally superior process over other printing methods. Environmentally friendly features include chemistry-free imaging, reduced paper waste, and waterless printing—which eliminates waste water and significantly reduces VOC emissions.

For more information about  
Presstek Products:

### Presstek, Inc.

55 Executive Drive  
Hudson, NH 03051 USA  
Tel: 603-595-7000  
[www.presstek.com](http://www.presstek.com)



Printed with Presstek chemistry-free digital offset technology on Chorus Art 100lb. Silk Cover. Chorus Art stock contains 50 percent recycled fiber, including 25 percent post-consumer waste, and is Forest Stewardship Council certified.

DI is a registered trademark of Presstek, Inc. All other trade names are the property of their respective owners.

Copyright © 2009 Presstek, Inc. 9-2666 10/09

 **PRESSTEK**  
A SMARTER WAY TO PRINT