

## DPM2000 : ProTint Settings on the DPM : TN # 14

### DPM2000 Local Setup

1. Once you have received your password for ProTint, you are ready to setup your DPM. If you have purchased ProTint but not yet received the password for your machine, please call 1-888-787-7222.
2. In the local mode go into *Utilities* to *Preferences* and click the tab entitled *Features*.
3. Under the "Features Name" scroll down to *ProTint*.
4. Under "Password" enter the code provided and click add.

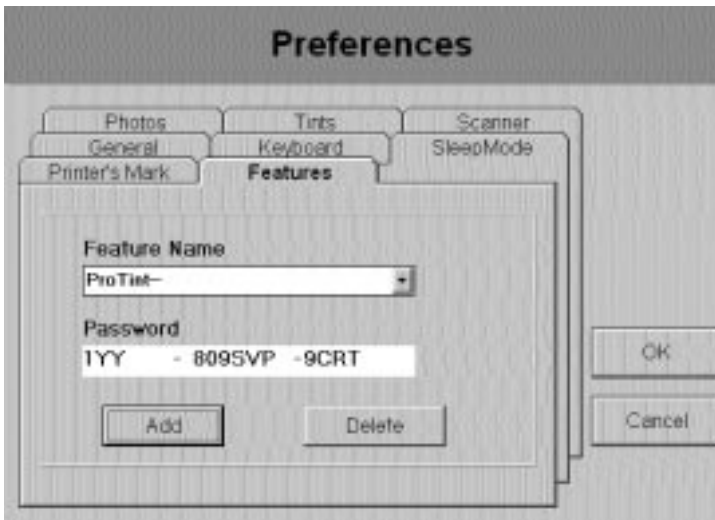


figure 1

5. Click *OK* and go back to the main Local menu.
6. Shut down the machine and restart.
7. You are now ready to begin using ProTint.

### DPM2000 RIP PageSetup

1. After following the instructions for the DPM2000 Local Setup start up the RIP.
2. Under the "File" menu select "Page Setup."
3. Click *Load Defaults*.

4. Make usual adjustments to the "Configure Device" to match your press setup and select "Screening" in the "Page Setup" window.

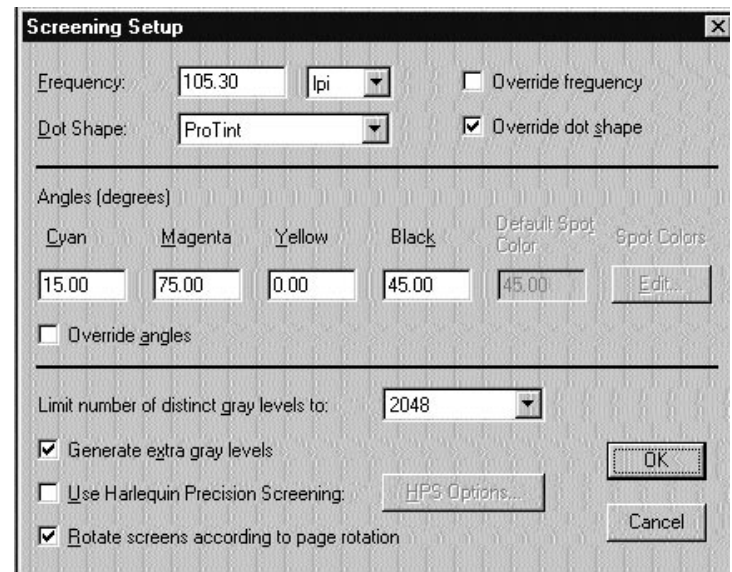


figure 2

5. Set the Frequency to one of the following line screens 70.2 for 150lpi, 84.2 for 175lpi and 105.3 for 200lpi (200lpi is recommended, so 105.3 should be entered as the frequency).
  6. **Do not** override line ruling or angles. Select Protint as the spot shape and **do** override dot shape. Turn Harlequin Percision Screening **OFF** (unchecked).
  7. Save the new page setup and give it a new name.
  8. It is recommended that you perform a new calibration test with the protint spot function to finger print your press (see Dip Tip #13). **Please note that when outputting calibration targets it is imperative that the frequency be entered as follows: 70.2 for 150lpi, 84.2 for 175lpi and 105.3 for 200lpi. (if 200 is entered as the frequency, an output of approximately 400lpi will be obtained—do not make this mistake!!!)**
- \* For questions on using ProTint spot function, please call our toll free support number at 1-888-787-7222.